

Seattle New 2 Bedroom Townhouse Near International District

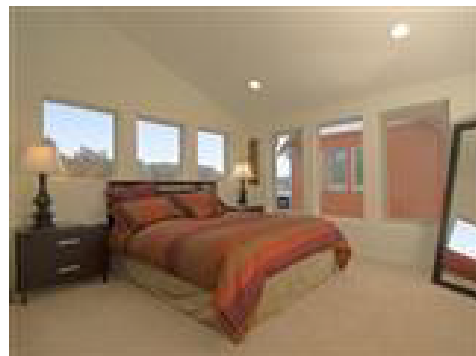
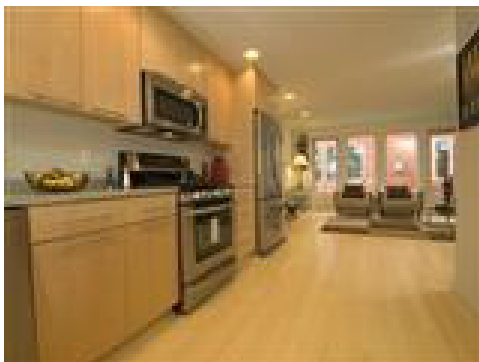


2 Bedroom and 1.5 Bath Townhouse

Experience modern living in this European inspired home with downtown views and open and floorplans. Architecturally designed to maximize natural light, this home offers oversized windows and skylights. Upstairs boasts two spacious bedrooms and a master bath loaded with designer Italian tile. Live minutes from downtown.

Built in 2009. 112 Square Meters. Fireplace, 1-car Garage.

US\$ 282,950



Valhalla Estates LLC
Erik@ValhallaEstates.com +1 917-609-6409